



GM Presentation
March 2016



DEVELOPING THE GOLD MINES OF THE FUTURE

SUMMARY



- Australian gold exploration and development company.
- Focused on growth by quality acquisitions and low-cost exploration.
- Three advanced projects in two gold regions of Western Australia.

Projects

Zuleika JV Project (JV to earn 49%): ~214.17km²

Mt Stirling Project (51% - 100%): 23.29km²

Malcolm Project (51% - 100%): 77.50km²



Drill Samples at Torian's Zuleika JV Project

Milestones

- ✓ Completed \$3M capital raising to fund current work
- ✓ Drilled over 36,500m at Zuleika and Mt Stirling
- ✓ Completed seven strategic acquisitions at Zuleika
- **Approximately 35% of results still awaited...**

THE STRATEGY

- Low Cost Exploration
- Regional Consolidation
- Fast Track Development

THE PROJECTS

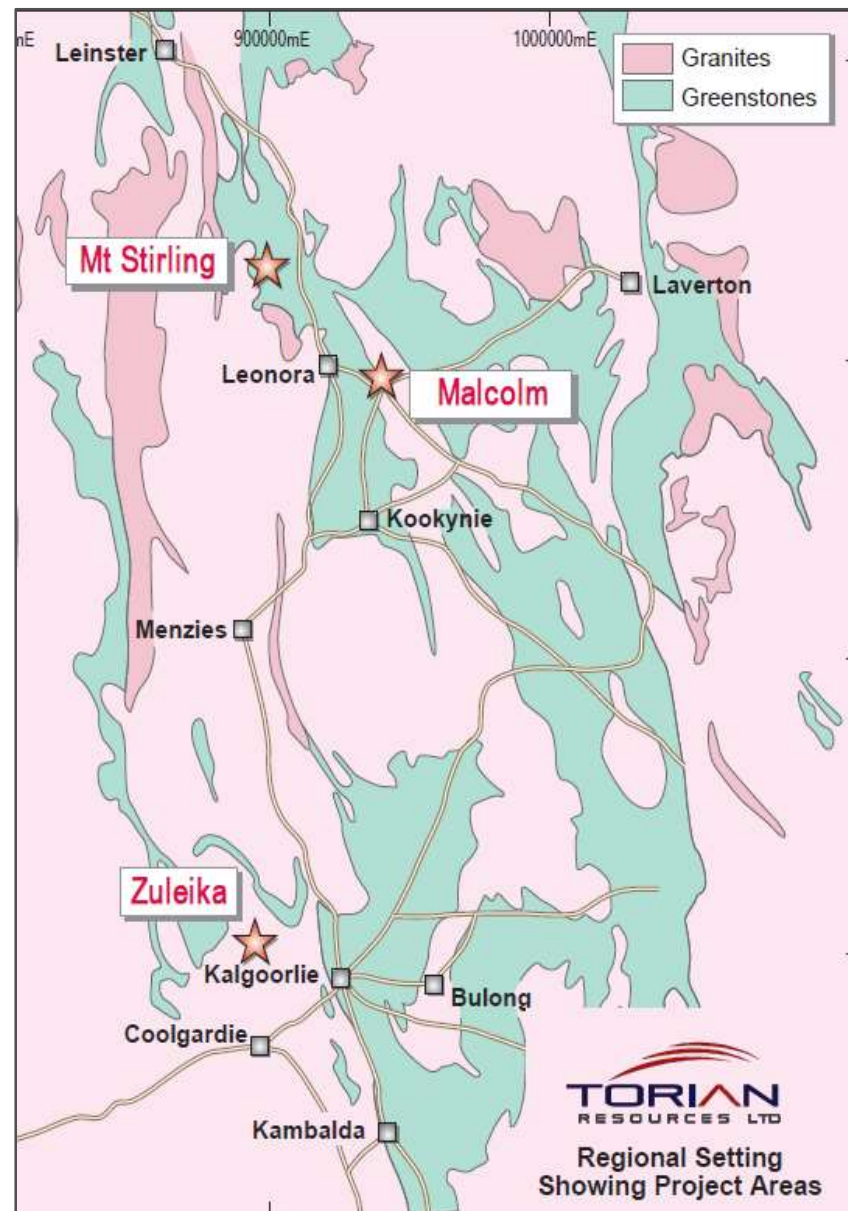
Overview

- Focused on acquiring and developing Western Australian gold assets
- Torian has three advanced projects located in the Goldfields Region
- The Goldfields Region has produced over 136 Million ounces of gold up until 2013
- Western Australia represents over 70% of Australia's total gold production

Zuleika JV – 50km NW of Kalgoorlie, WA

Mt Stirling – 40km NW of Leonora, WA

Malcolm – 15km E of Leonora, WA

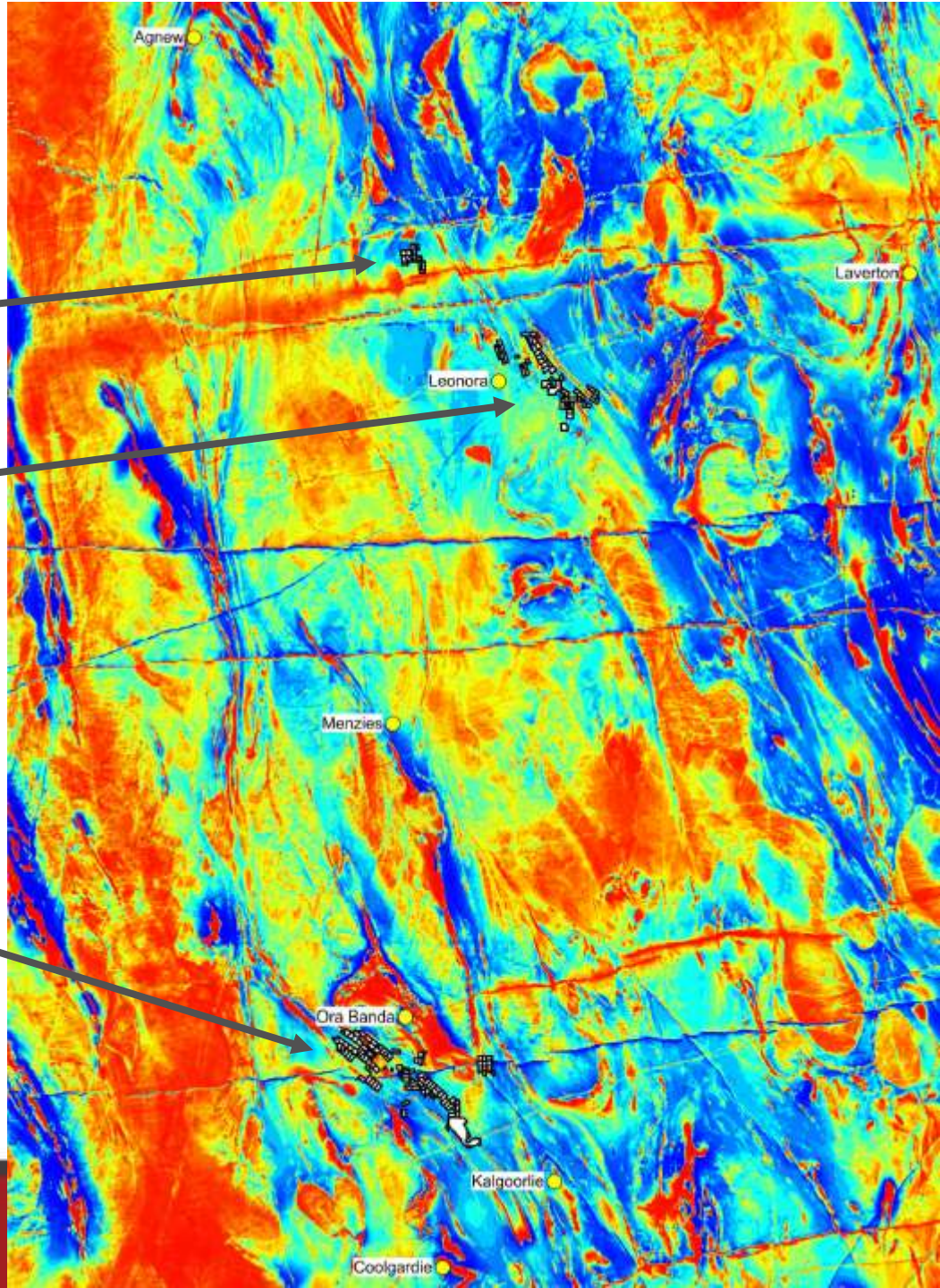


Magnetics

Mt Stirling

Malcolm

Zuleika
JV

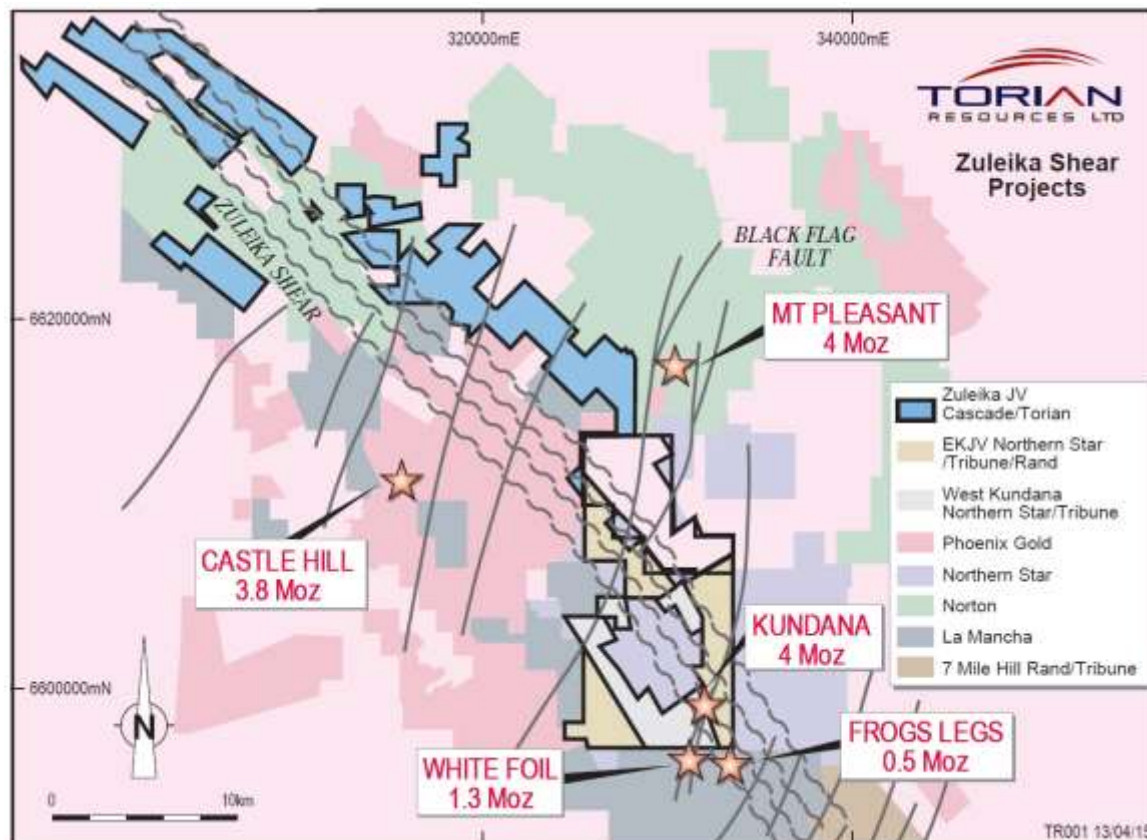


ZULEIKA JV



Overview Then

- 5th largest landholder in the region.
- Significant strike length of the black shale line.
- 76 tenements including 2 Mining Leases, 74 Prospecting Licenses.
- Total land area approximately 120km².

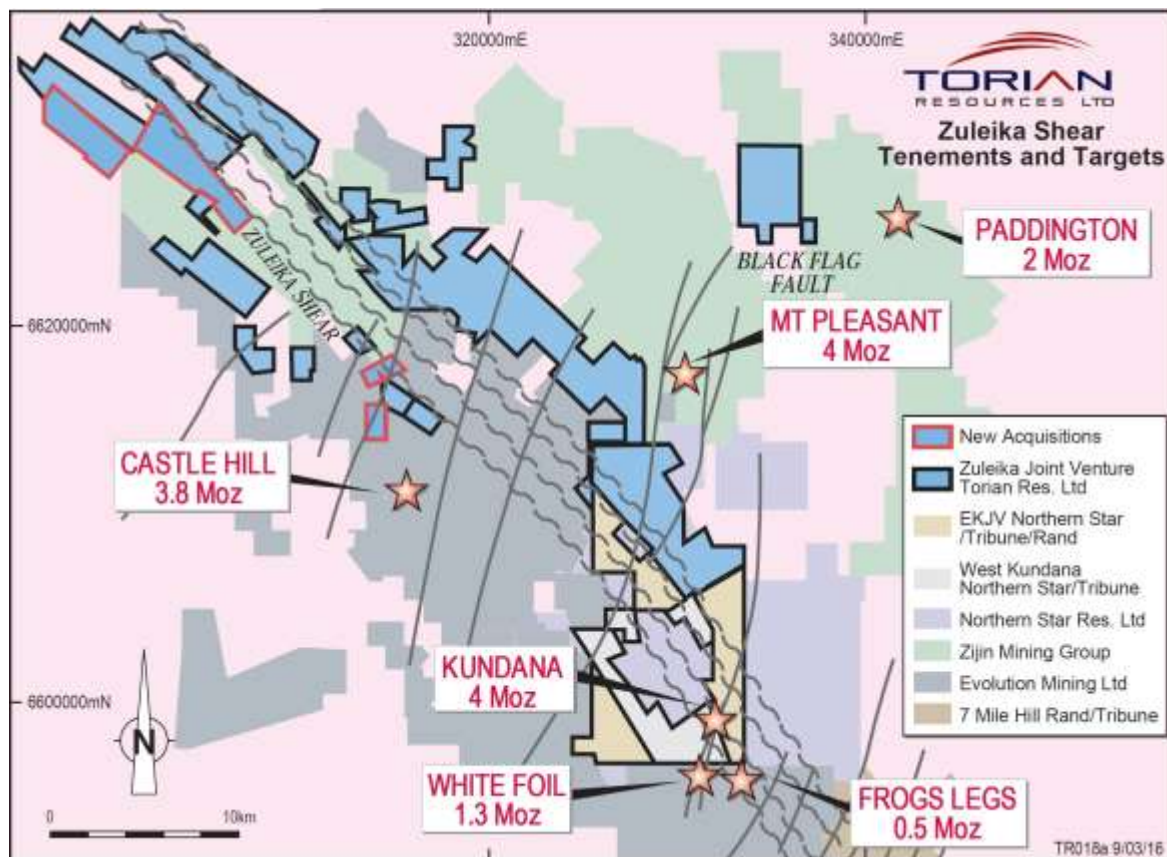


ZULEIKA JV



Overview Now

- Third largest landholder in the region.
- Hold the largest strike of the black shale line.
- 119 tenements including 2 Mining Leases, 1 Exploration License and 116 Prospecting Licenses.
- 26 of these tenements are still pending.
- Total land area now approximately 214km².



ZULEIKA JV

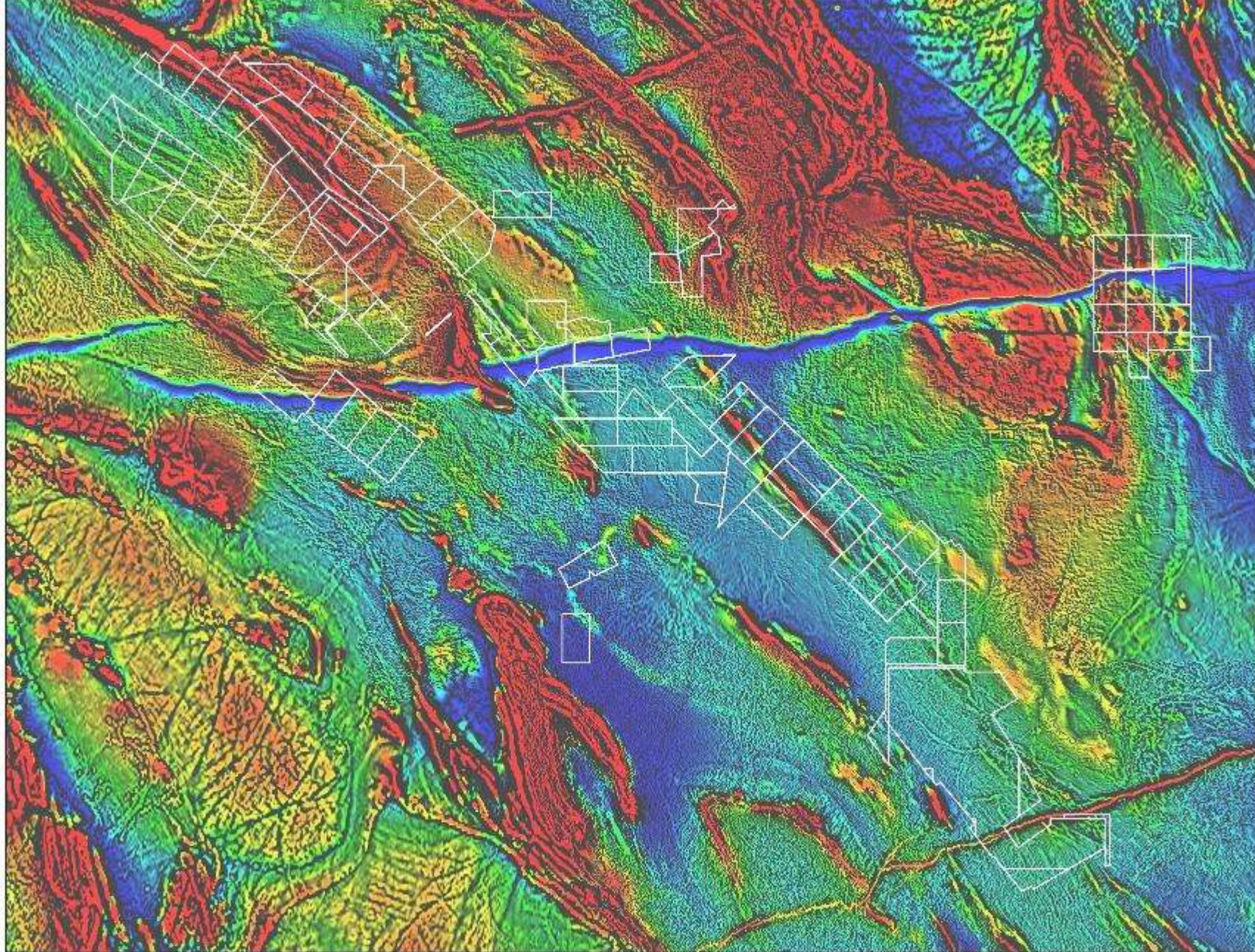


Current Exploration

- +36,500m of drilling
- 2nd most active gold explorer in WA.
- Torian's Phase 1 drill program has successfully confirmed Torian's interpretation of the geology.
- About 35% of results from the drill program are awaited

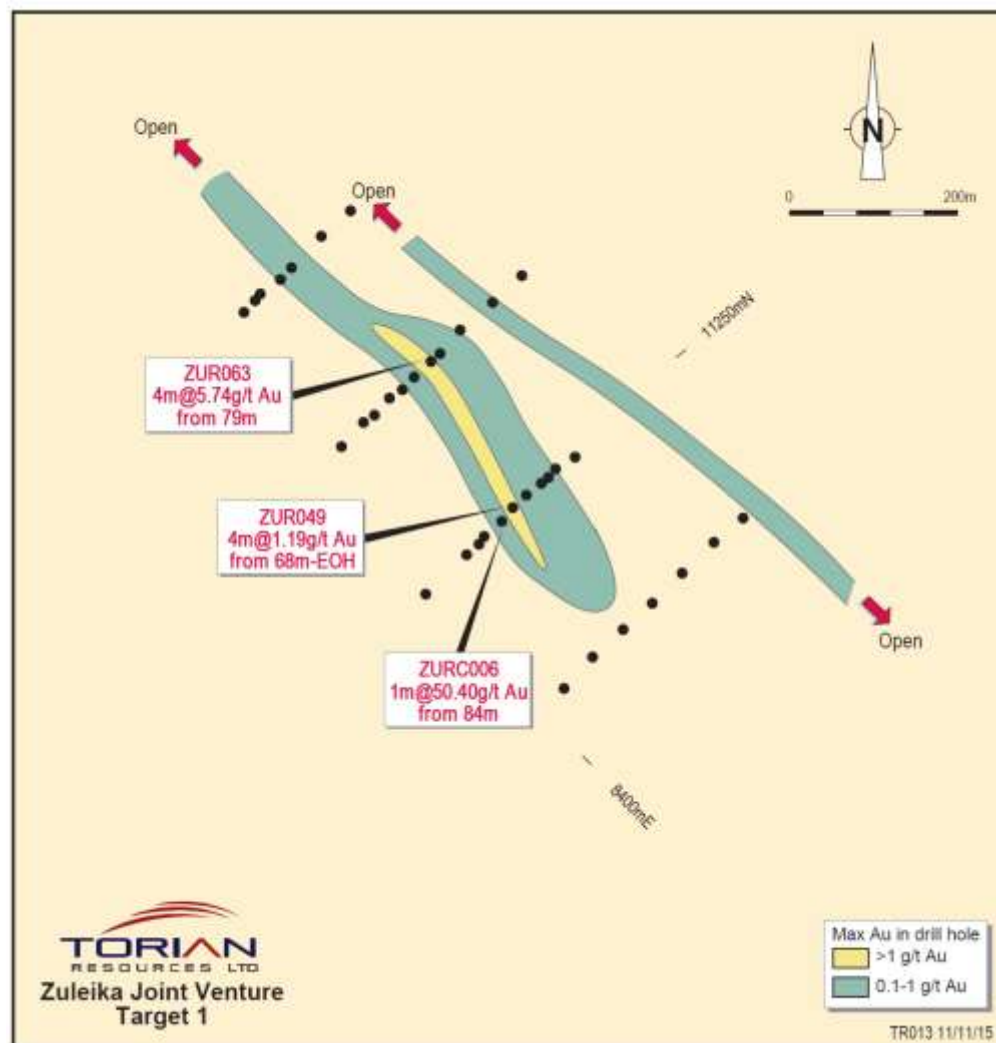




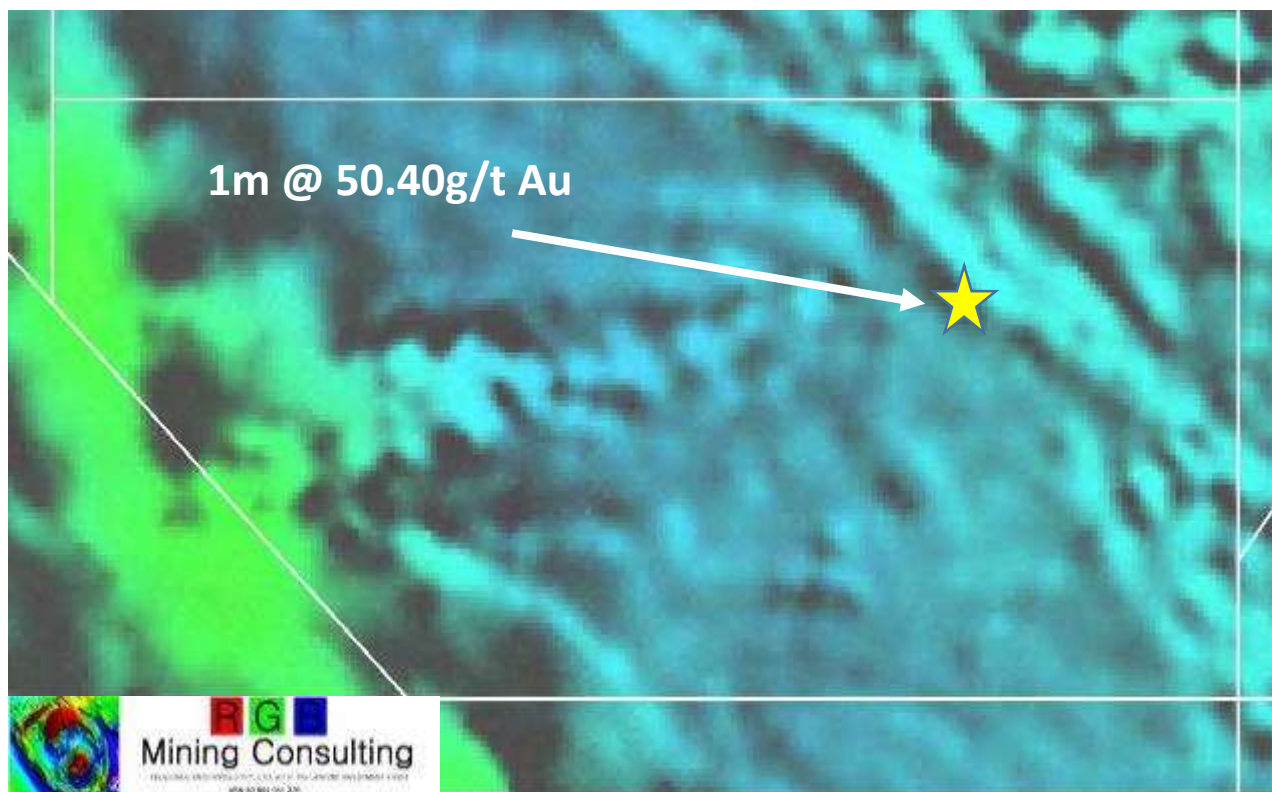


Target 1

- 1.5km E of Bullant
- 500m strike
- Kurrawang Fm contact
- Best hole to date 1m @ 50.40g/t Au from 84m
- Open in all directions

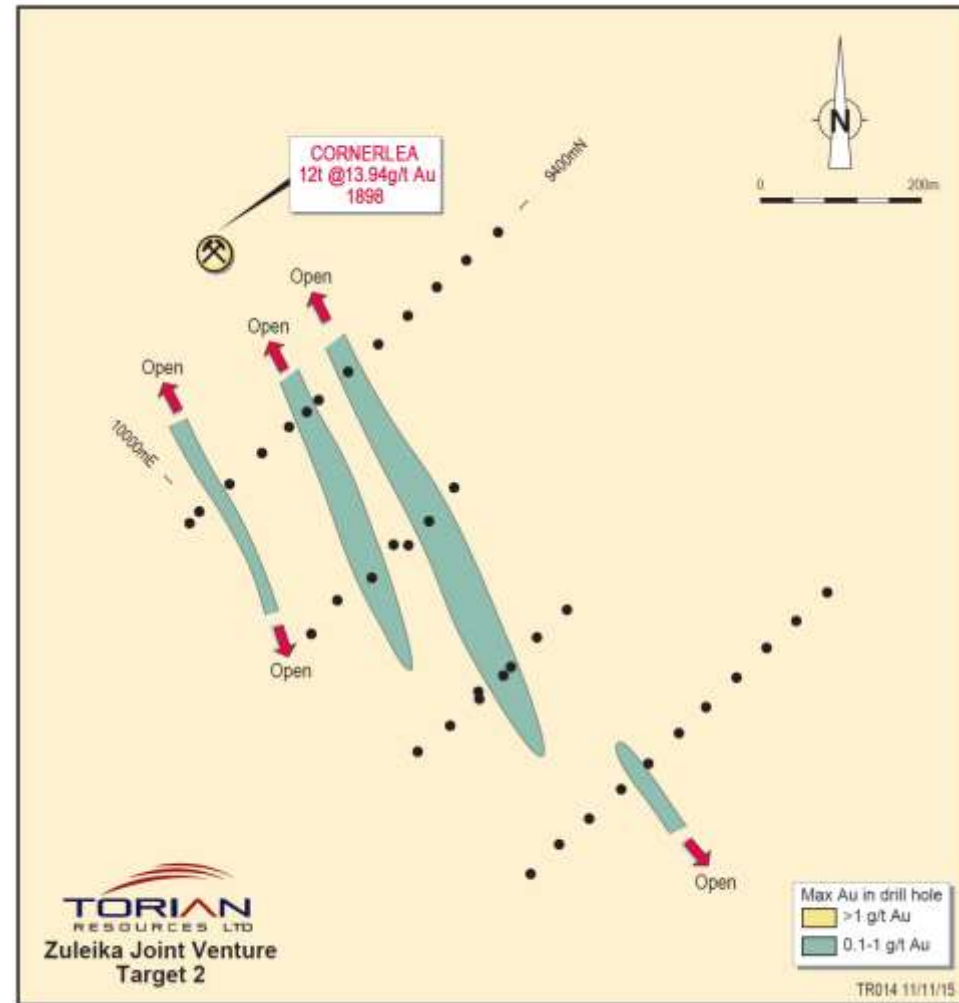


Target 1

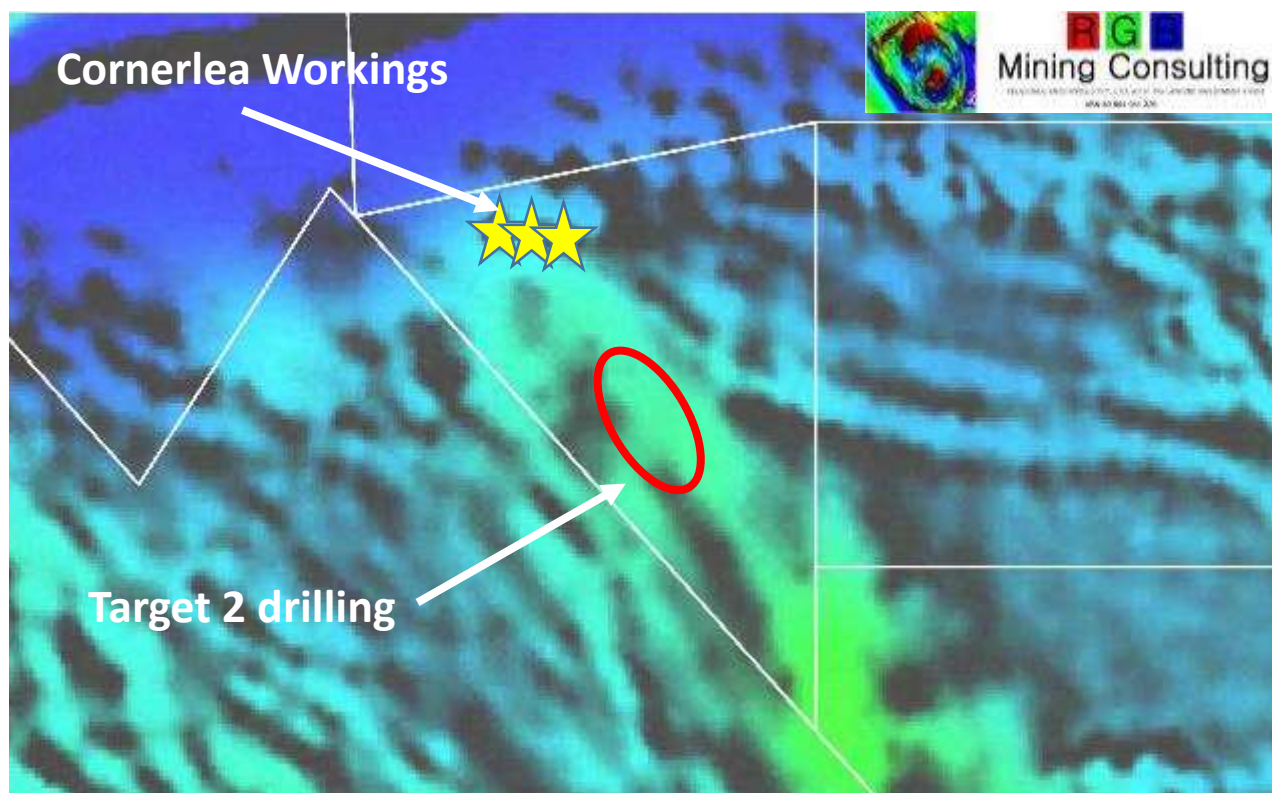


Target 2

- 800m SW of T1
- Sheared Felsics
- +400m strike
- Low Priority



Target 2

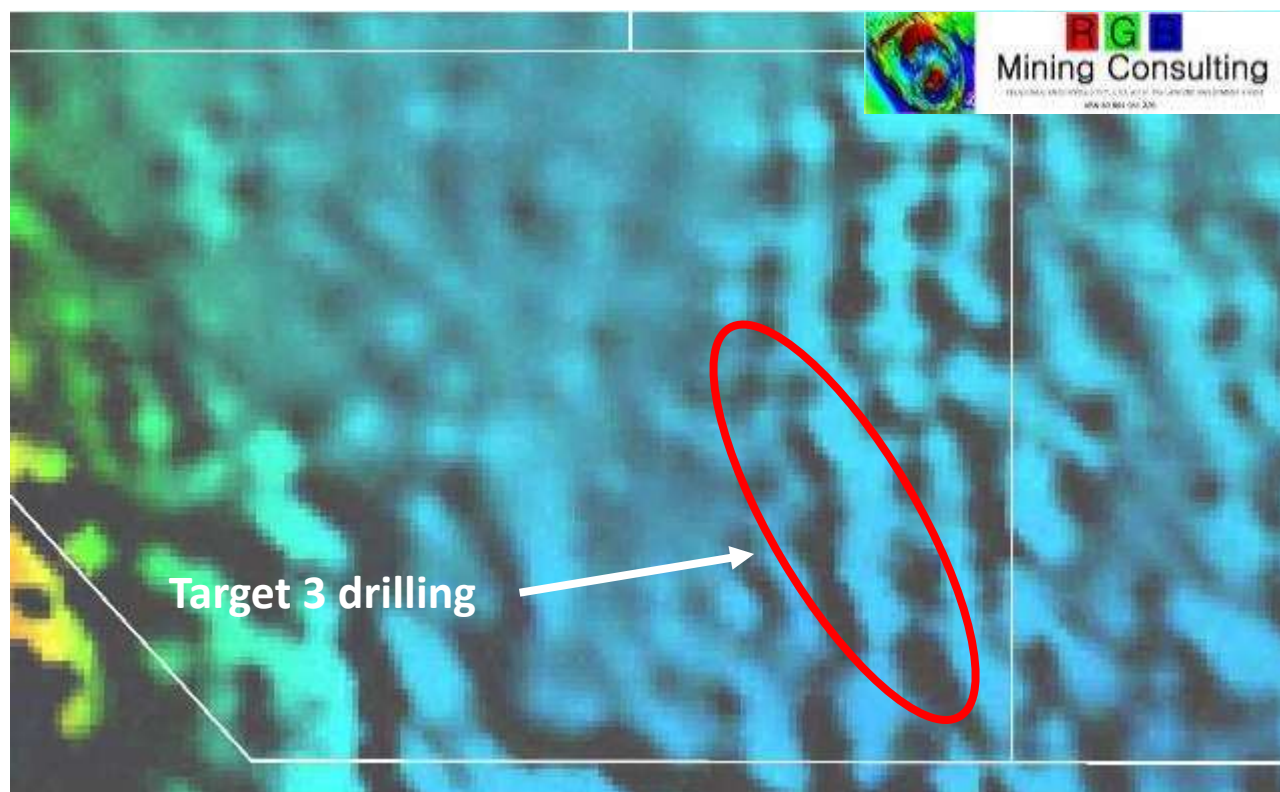


Target 3

- 1km SE of T2
- Sheared Felsics
- +800m strike
- Shallow old diggings
- Several +1g/t Au intersections



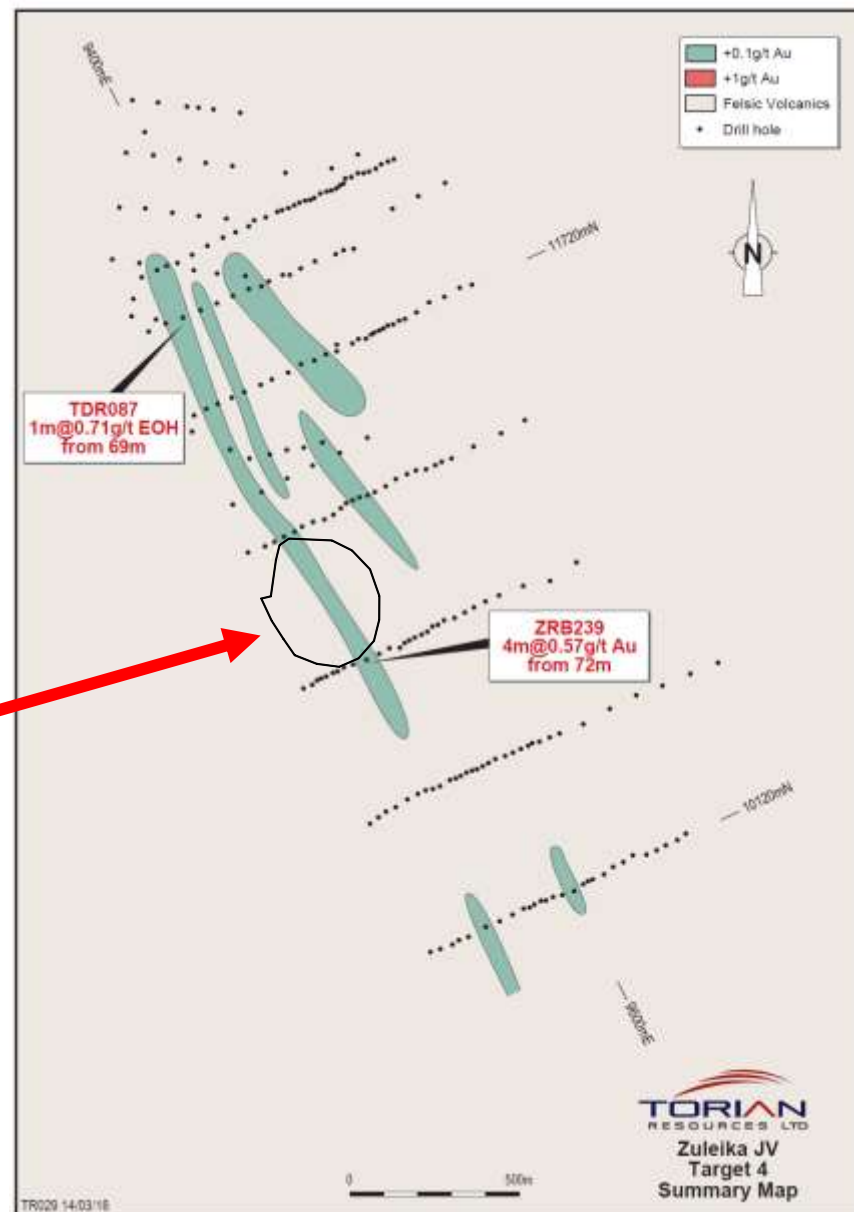
Target 3

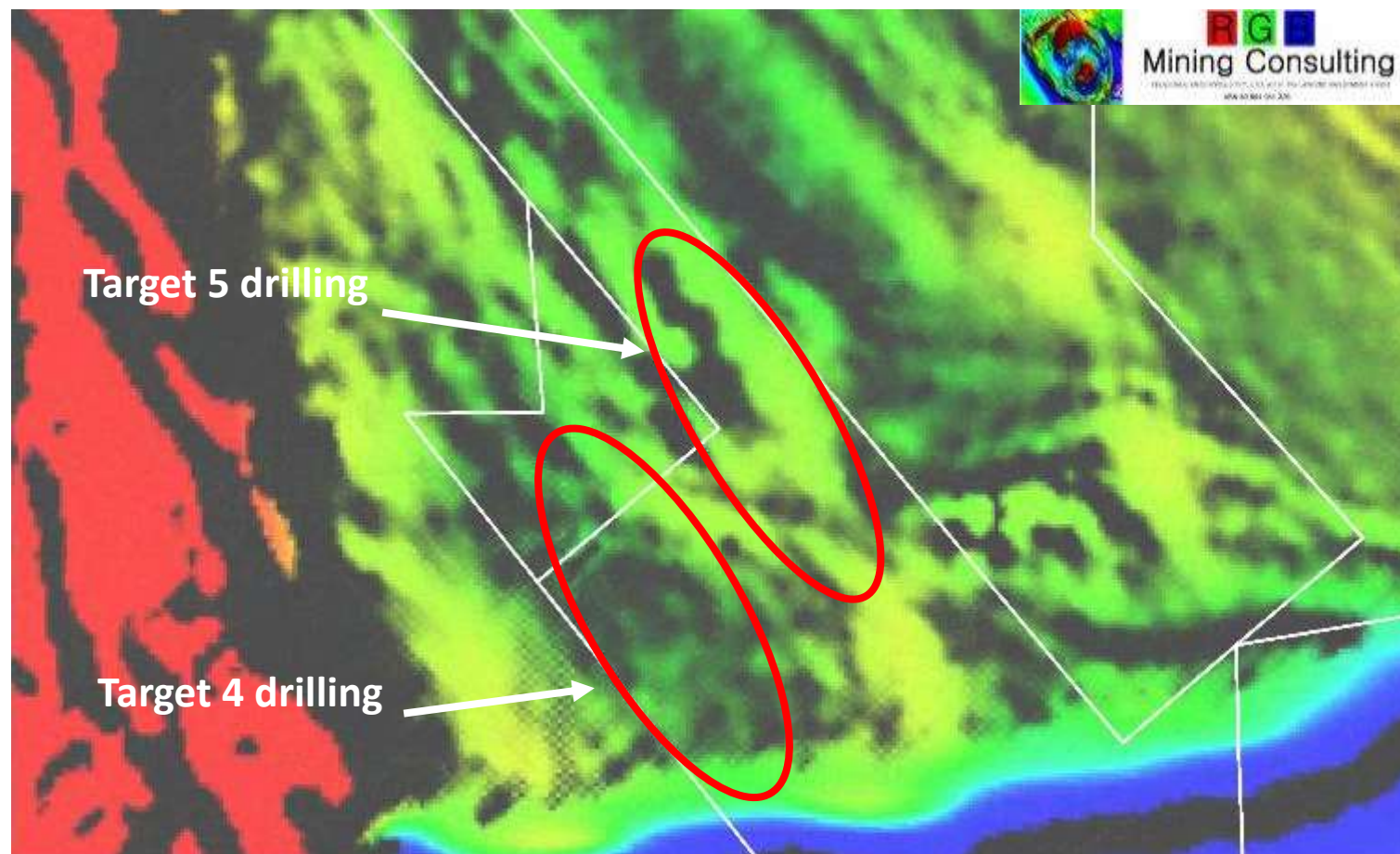


Target 4

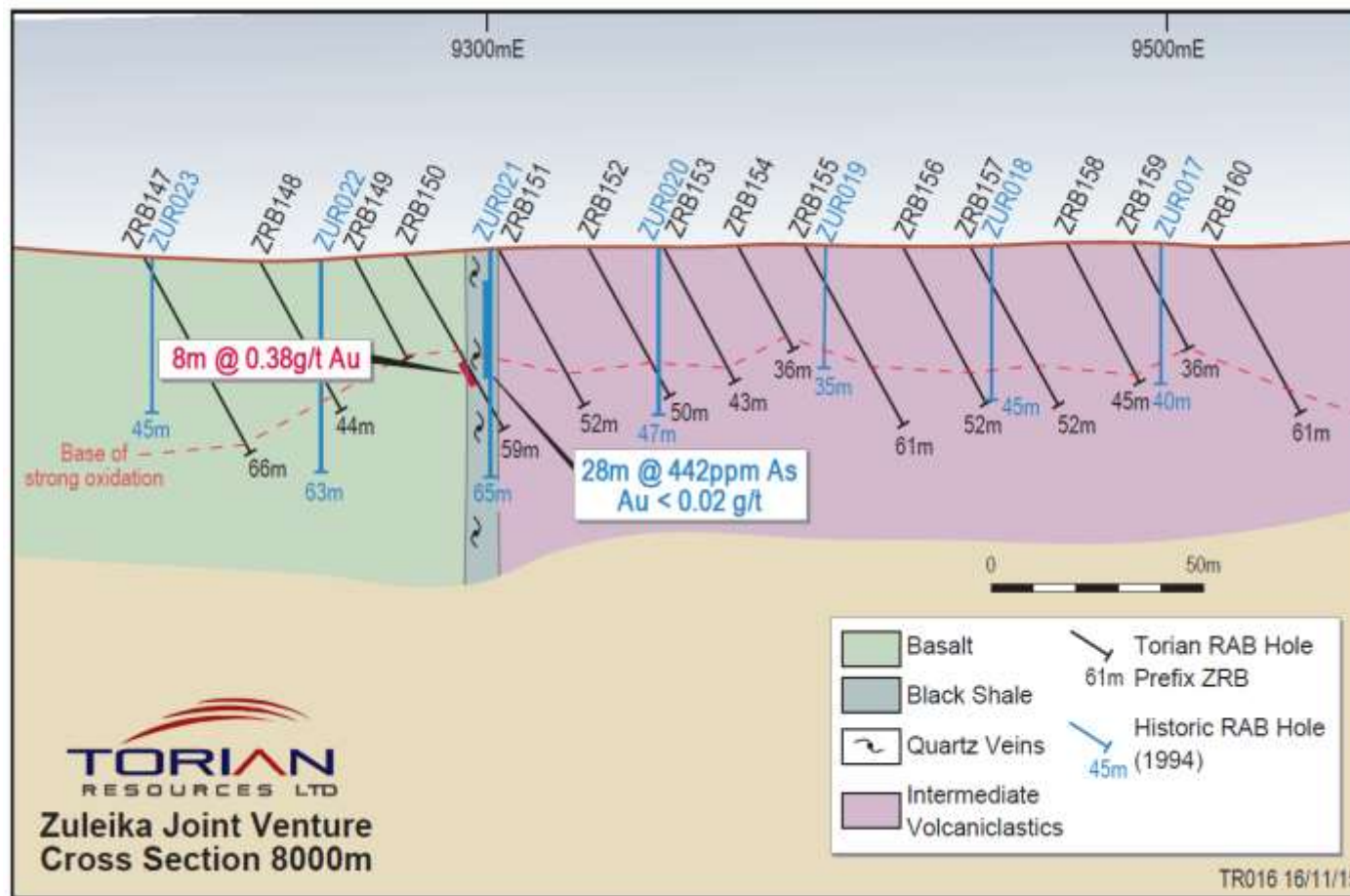
- +5km strike, black shale
- Some small old diggings
- ? Kundana North

Hornet Pit for scale



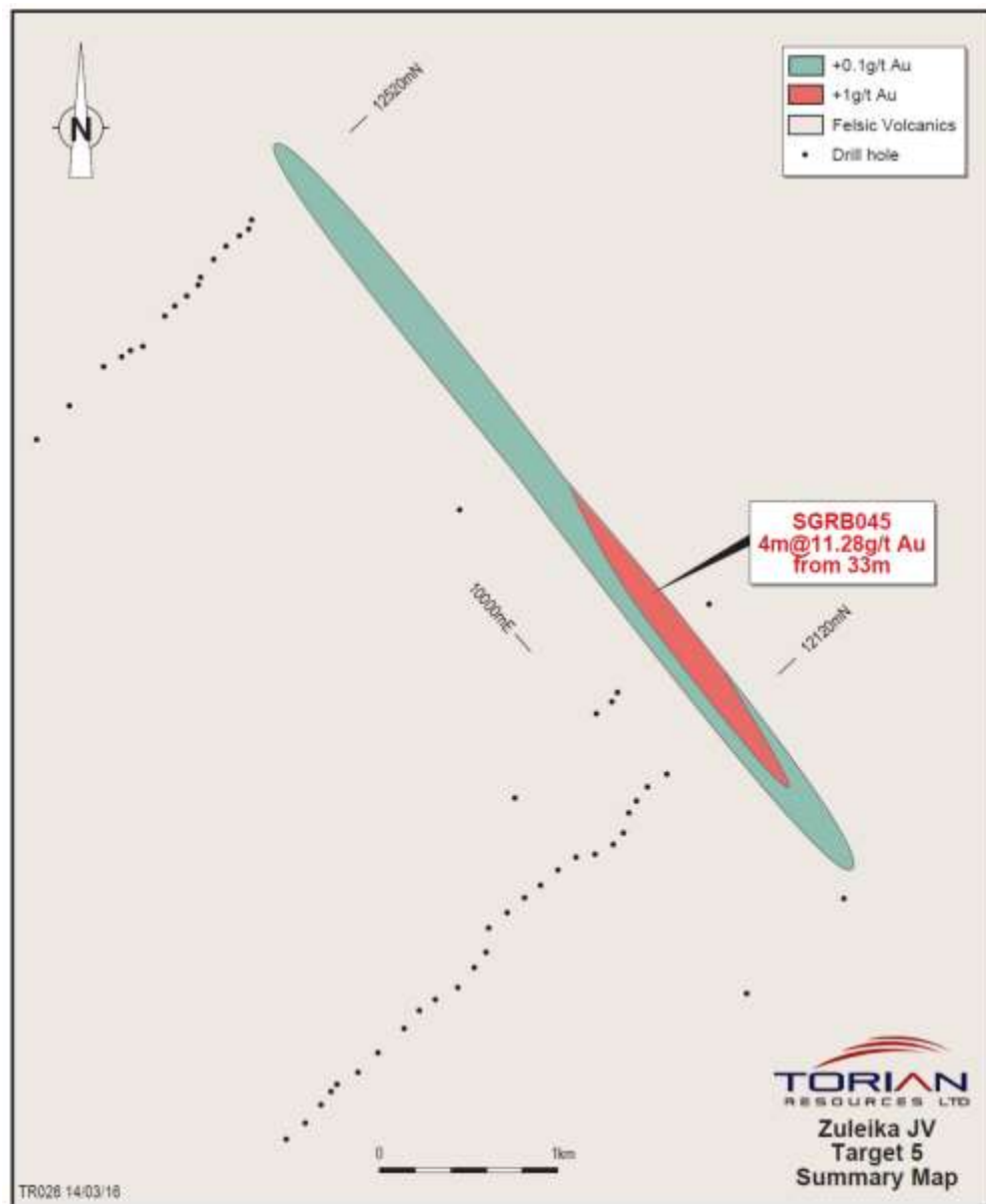


Target 4



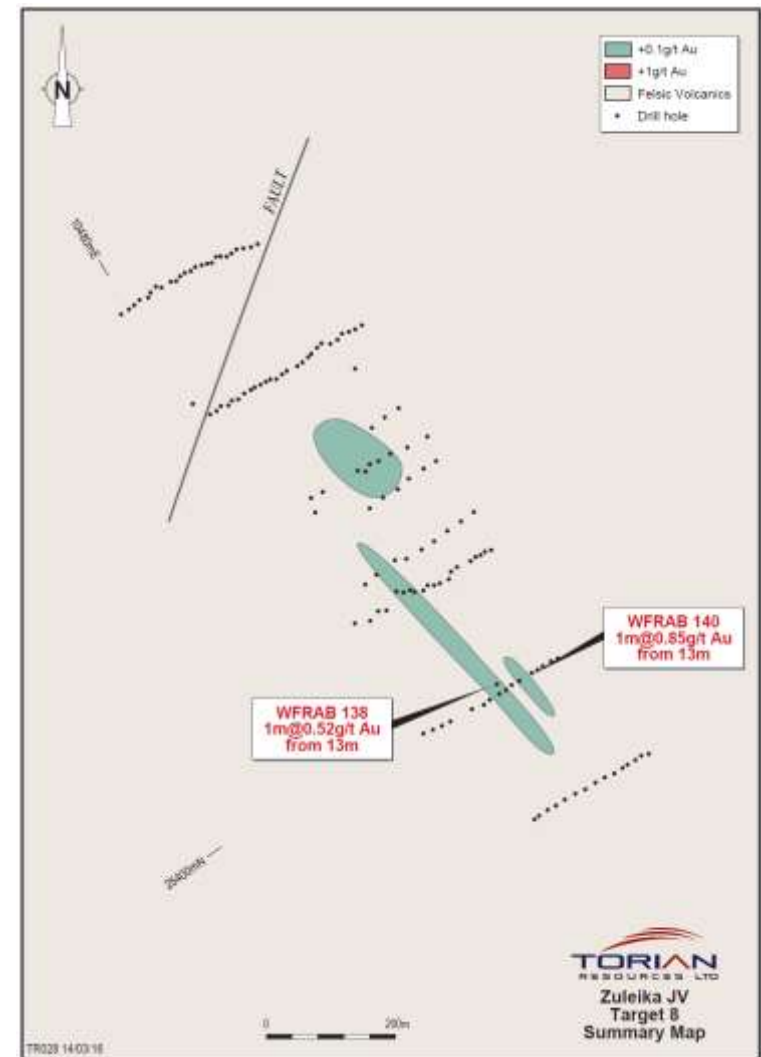
Target 5

- 400m E of T4
- Sheared Felsics
- +200m strike
- No old diggings
- Best hole 4m @
11.28g/t Au from 33m

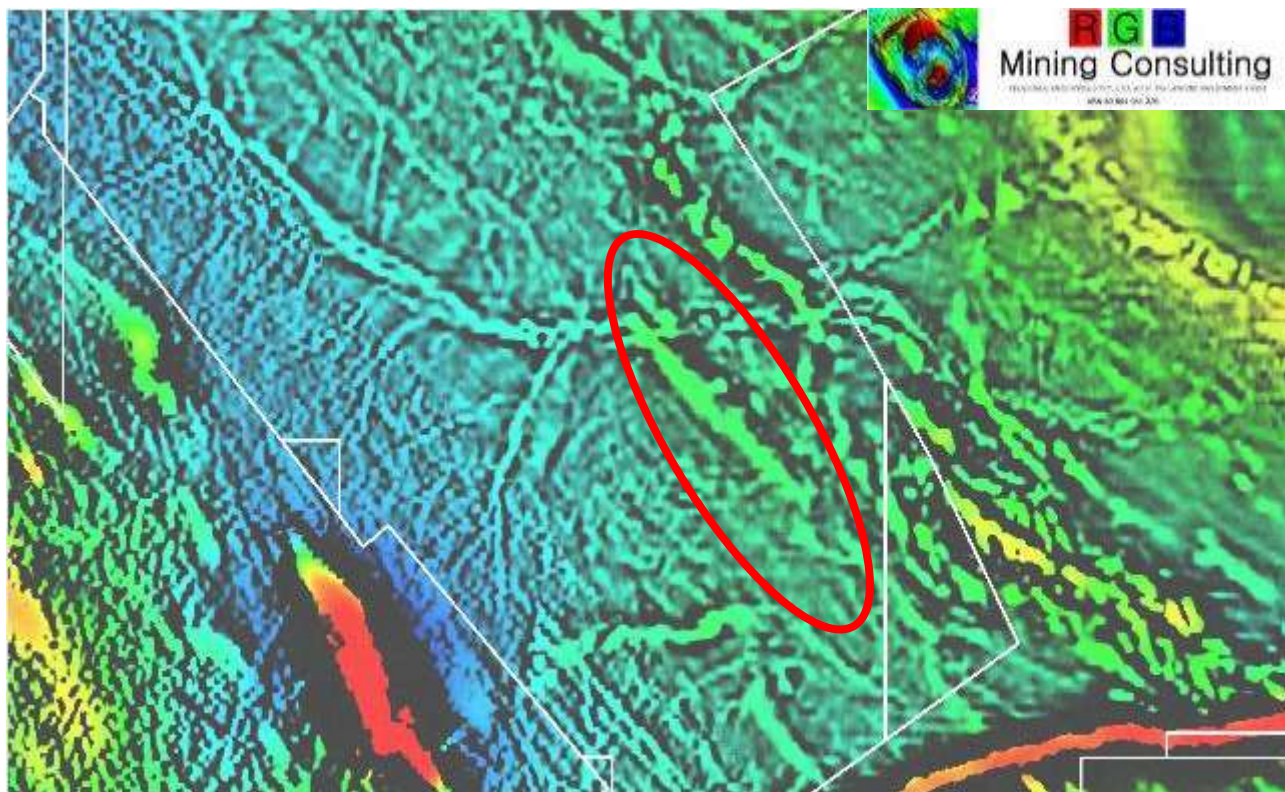


Targets 8 and 9

- 5km north of Kundana Mine
- Sheared Kurrawang Fm contact
- Nuggets on surface
- Scout drilling with several +.5g/t Au targets



Targets 8 and 9



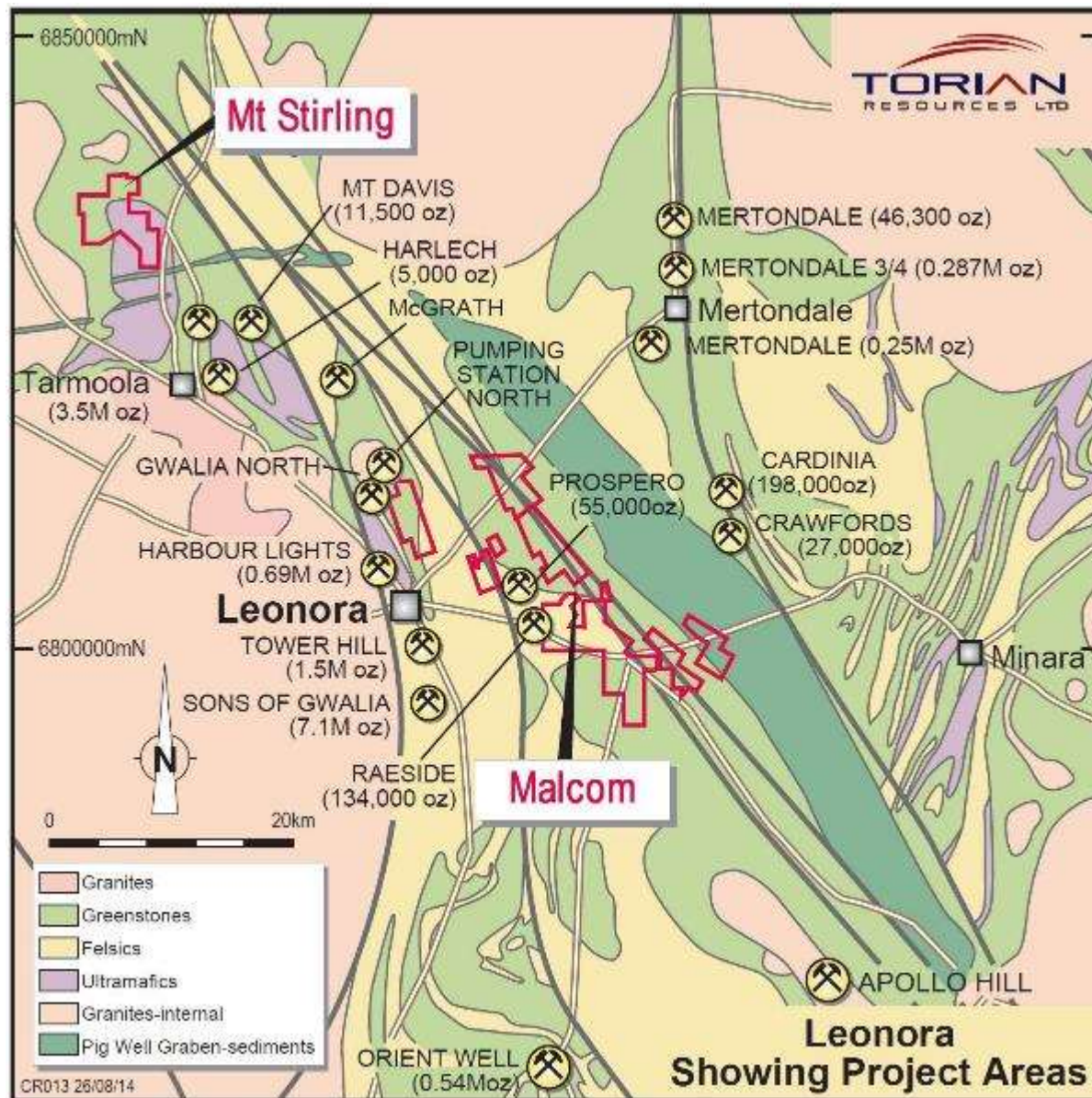
Leonora

- Mt Stirling and Malcolm Projects
- Within 50km of Leonora



Leonora

- Mt Stirling
- Malcolm



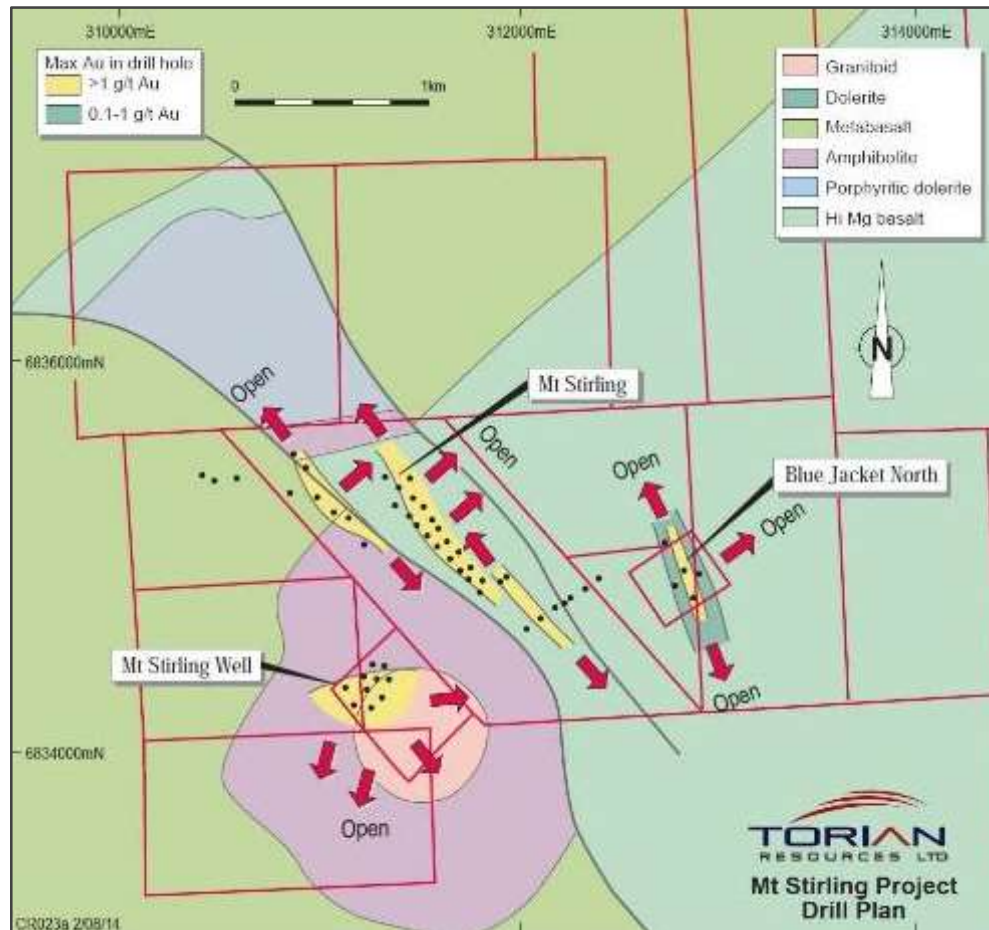
Mt Stirling

Overview

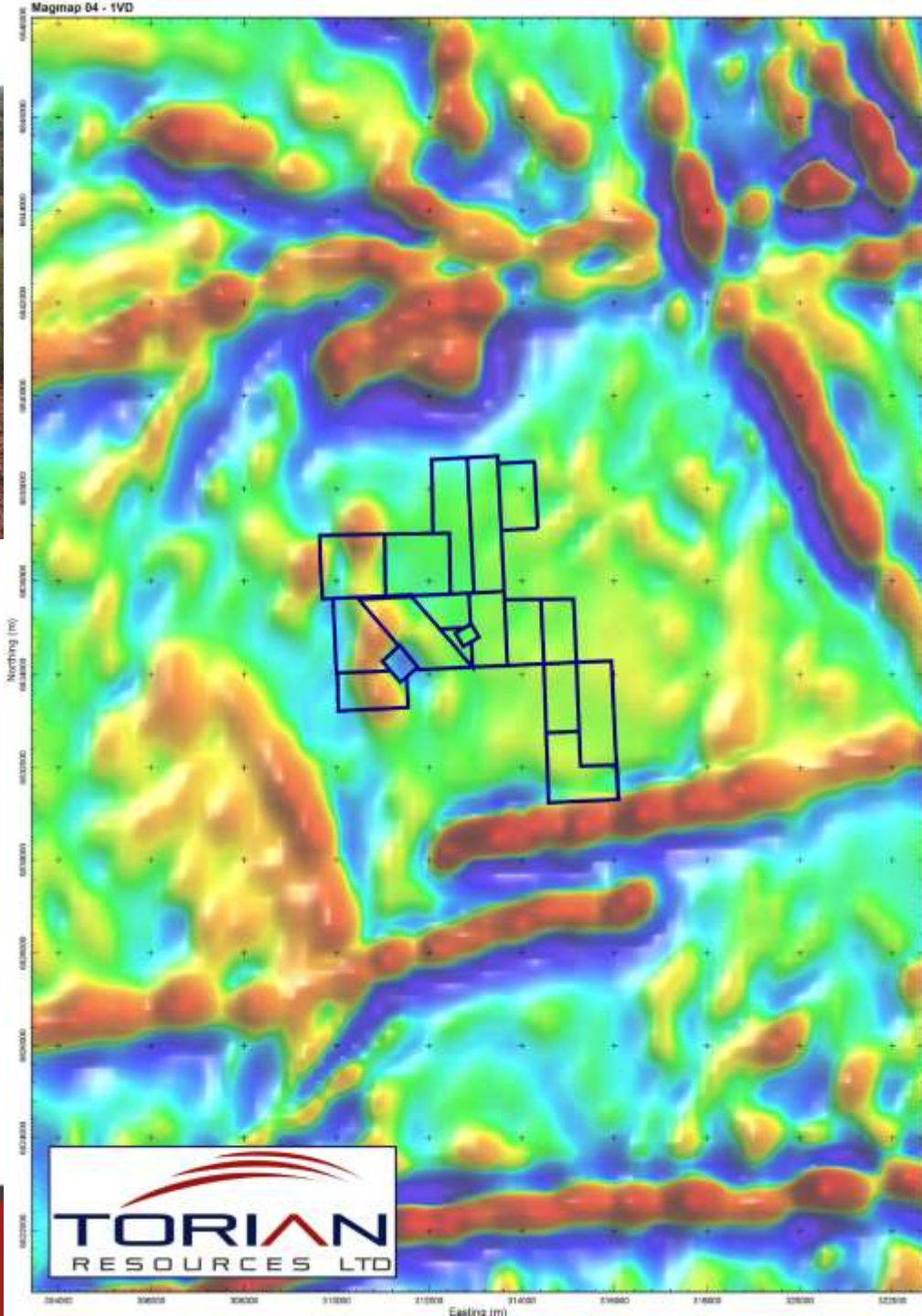
- 40km NW of Leonora
- Outcropping, high grade resource
- 23.29km² area, 19 Prospecting Licences

JORC Resources

- Initial JORC inferred resources of 31,727 oz
- This resource does not include recent high grade drill results



Targets and geology at Mt Stirling



ASX CODE: **TNR**

MT STIRLING

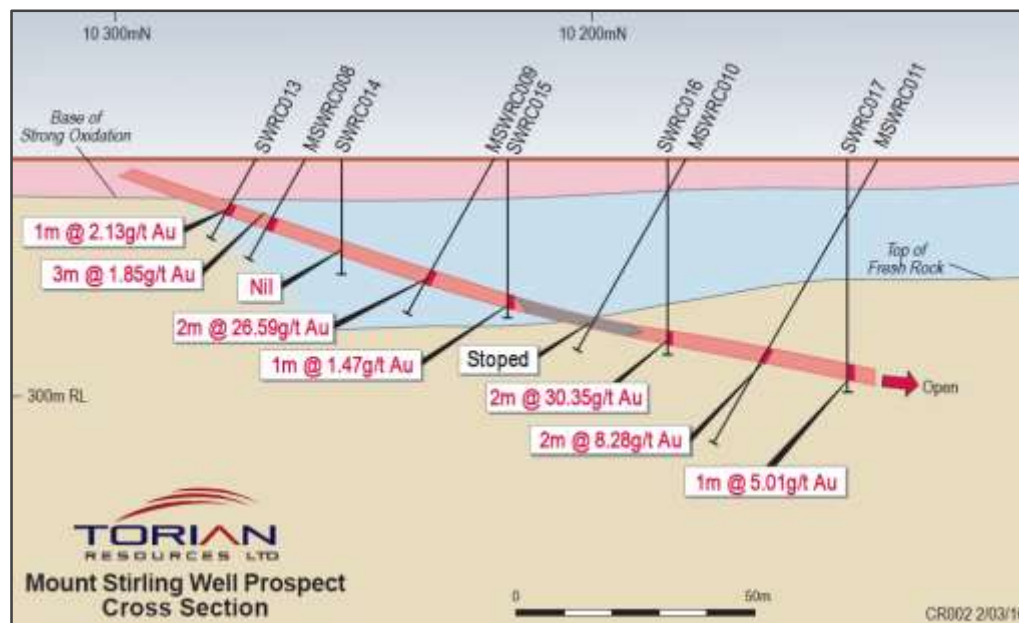


Historic Production

- 3,535t @ 52.22g/t Au for 5,935 oz
- Currently undertaking metallurgical test work
- Approvals received for Phase 2 of the drilling program

What's Next?

- Scoping study currently underway.
- Step out drilling to determine size of deposit.



Cross section showing results of previous drilling

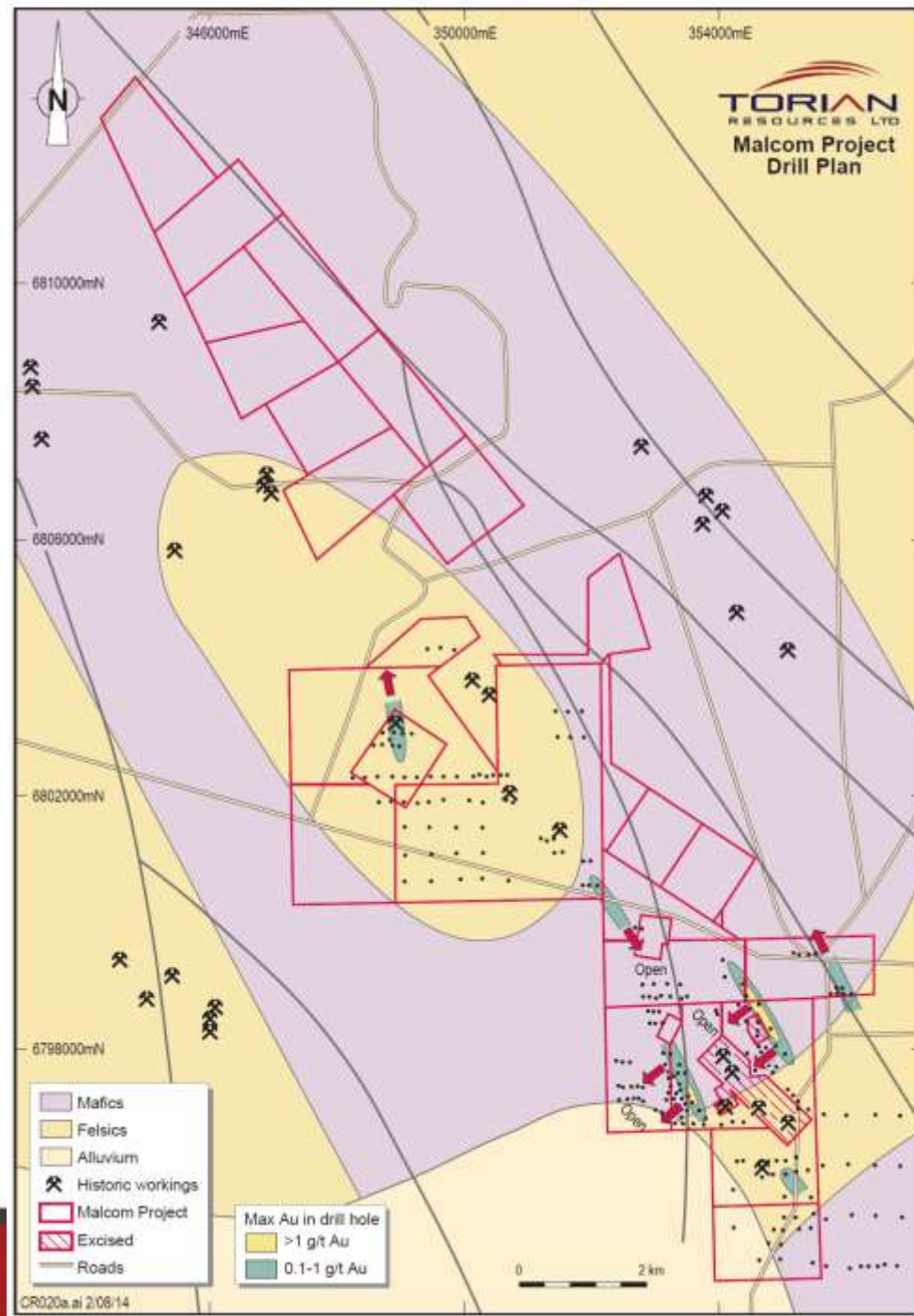
Malcolm

Overview

- 15km E of Leonora
- Outcropping, high grade resource
- Numerous targets
- 77.50km² area, 34 Prospecting Licences

JORC Resources

- Initial JORC inferred resources of 48,000t @ 3.72g/t Au for 5,750 oz



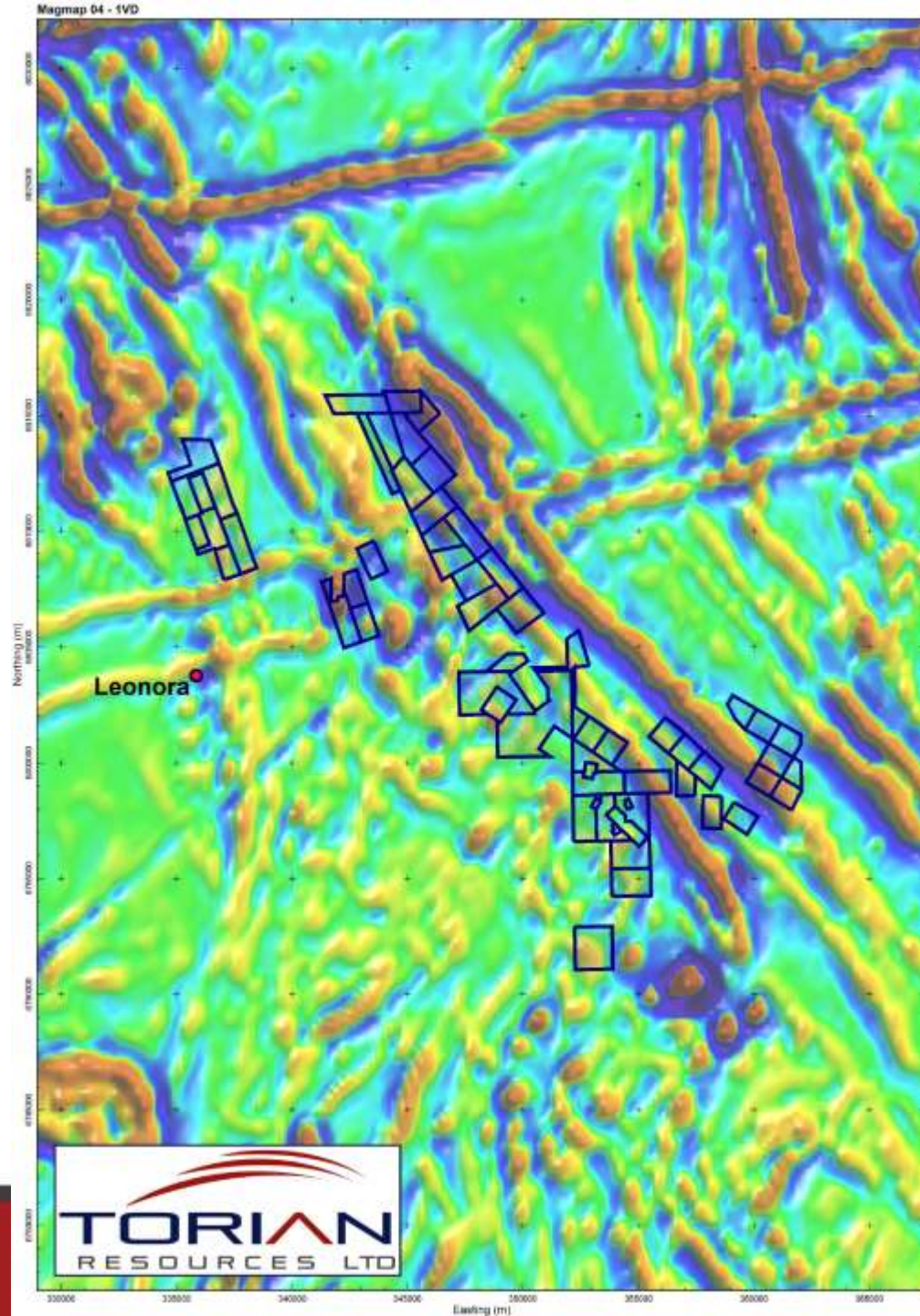
Malcolm

Overview

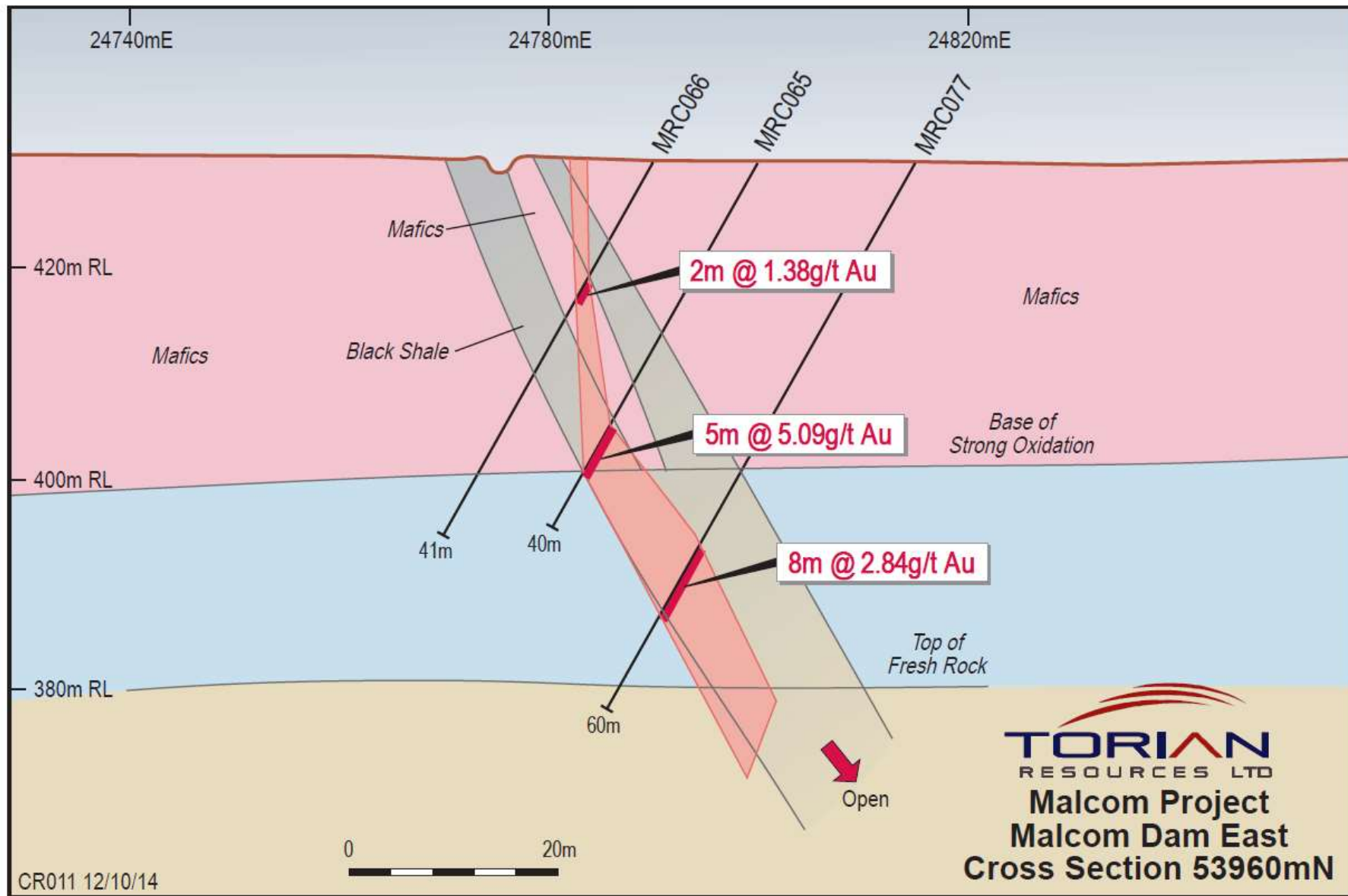
- +10 targets drilled to date
- Outcropping, high grade resource

Drill Highlights

- 14m @ 4.48g/t Au from 24m – Rabbit Warren South
- 4m @ 10.00 g/t Au from 32m – Malcolm Dam
- 4m @ 7.00g/t Au from 44m – Dumbartons
- 1m @ 15.00g/t Au from 29 - Mafeking







IMPORTANT INFORMATION



This presentation has been prepared by and issued by Torian Resources Limited ABN 72 002 261 565 (**Torian or Company**) to assist in informing interested parties about the Company and should not be considered as an offer or invitation to subscribe for or purchase any securities in the Company or as an inducement to make an offer or invitation with respect to those securities. No agreement to subscribe for securities in the Company will be entered into on the basis of this presentation.

This presentation is limited to persons who are sophisticated investors for the purposes of s708(8) or professional investors for the purposes of s708(11) of the Corporations Act 2001 or persons who hold Australian financial services licences and any of their representatives. By attending and/or receiving this presentation you warrant to Torian that you are such a person. This presentation may contain forward looking statements. Whilst Torian has no reason to believe that any such statements are either false, misleading or incorrect, it cannot and does not warrant or guarantee that through either the passage of time or actions beyond the control of Torian they will not become so.

You should not act and you must refrain from acting in reliance on any of this presentation material. Nothing contained in this presentation constitutes investment, legal, tax or other advice. This overview of Torian does not purport to be all inclusive or to contain all information which its recipients may require in order to make an informed assessment of the Company's prospects. Before making an investment decision, you should conduct, with the assistance of your broker or other financial or professional adviser, your own investigation in light of your particular investment needs, objectives and financial circumstances and perform your own analysis in order to satisfy yourself as to the accuracy and completeness of the information, statements and opinions contained in this presentation prior to making any investment decision.

Neither the Company nor its advisers has verified the accuracy or completeness of the information, statements and opinions contained in this presentation. Accordingly, to the maximum extent permitted by law, the Company make's no representation and give no assurance, guarantee or warranty, express or implied, as to, and take no responsibility and assume no liability for, the authenticity, validity, accuracy, suitability or completeness of, or any errors in or omissions, from any information, statement or opinion contained in this presentation. The contents of this presentation are confidential. This presentation is being provided to you on the condition that you do not reproduce or communicate it or disclose it to, or discuss it with, any other person without the prior written permission of the Company.

Torian, its officers, employees, authorised representatives, consultants and its associates, officers and family members do currently and in the future may have interests in the securities of the Company. In addition, Torian's advisors will earn commissions, fees and other benefits and advantages, whether pecuniary or not and whether direct or indirect in connection with the Capital Raising(s) for the Company, advising and providing services to the Company.

This presentation contains information, ideas and analysis which are proprietary to Torian. By agreeing to receive this information you also agree to respect the confidential nature of this entire presentation. Specifically you agree not to reproduce in any manner or distribute any part of the information contained herein without the prior written consent of the Company.

Information in this report pertaining to mineral resources and exploration results was compiled by Mr Matthew P. Sullivan, who is a member of Aus.I.M.M. Mr Sullivan is the principal of Jemda Pty Ltd, geological consultants to the company. Mr Sullivan has sufficient experience which is relevant to the style of mineralisation and the type of deposit that is under consideration and to the activity that he is undertaking to qualify as a competent person as defined in the 2012 Edition of the "Australasian Code for Reporting of Exploration Results, Mineral Resources and Ore Reserves". Mr Sullivan consents to the inclusion in the report of the matters based on his information in the form and context in which it appears.